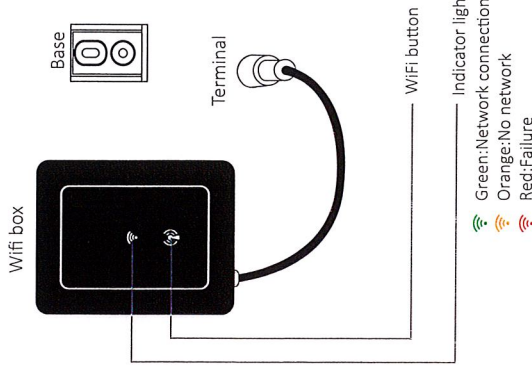
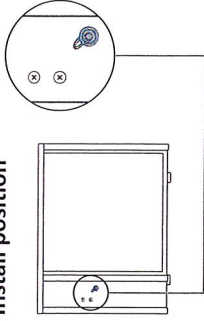


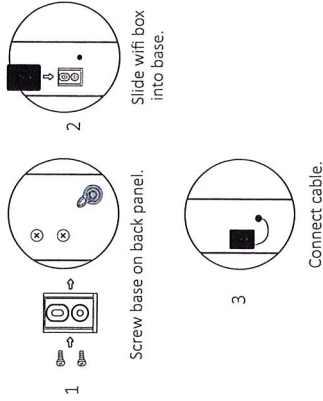
a. Components



b. Install position



c. Installation



1. APP Download



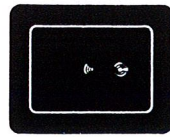
Android mobile please download from



iphone please download from

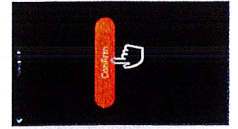
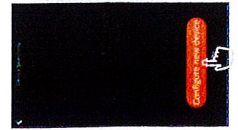


2. APP Binding

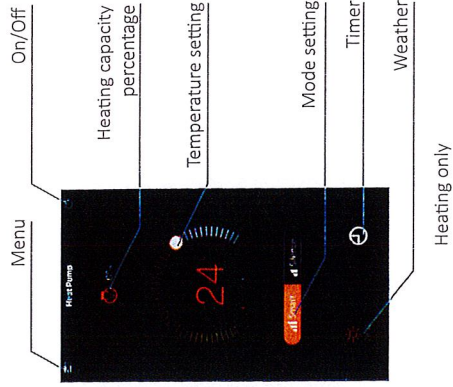
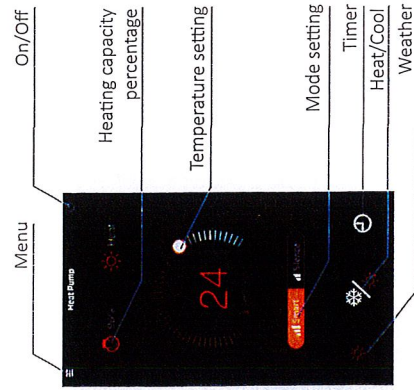


1. Press Wifi button for 3 seconds to enter binding program, light will flash.

2. Enter "Configure new device" in APP, follow indication to finish binding.



3. Operation



Notice:

1. If wifi signal can not cover machine, please connect 10 m extend cable.
2. The weather forecast is just for reference.

APP is subject to updating without notice.